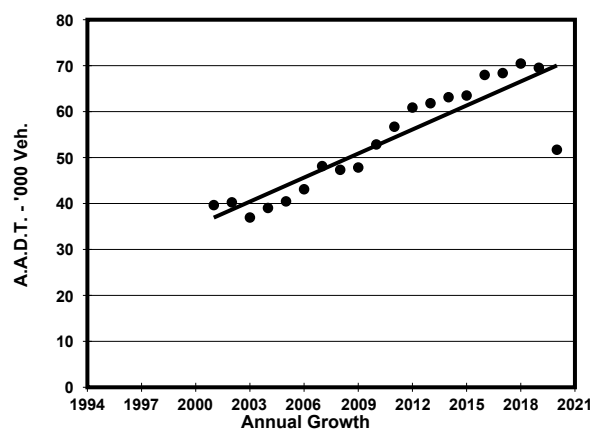
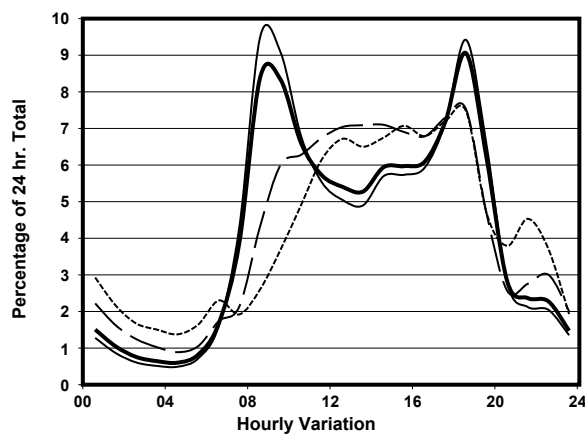
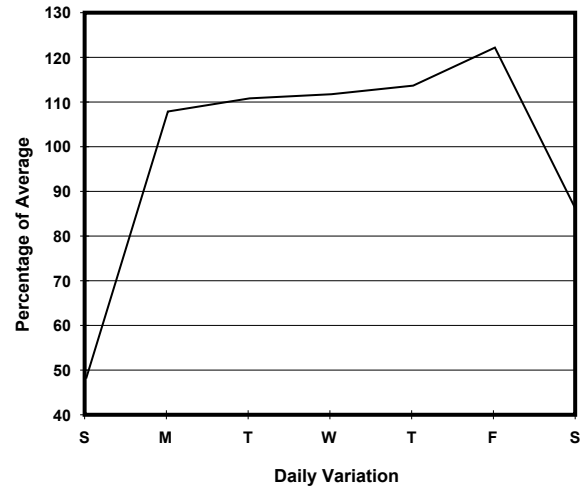
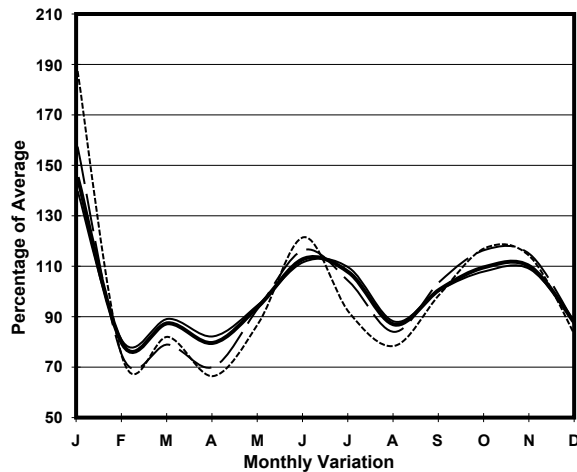


YEAR 2020
CORE STATION 1026
ROAD NETWORK MAJOR
ROAD TYPE URBAN TRUNK ROAD

LINK WESTERN HARBOUR CROSSING (from TOLL PLAZA to SOUTH PORTAL)



1. TRAFFIC FLOW VARIATION AND GROWTH



— All day — Mon.- Fri. Sat. - - - - - Sun.

2. TRAFFIC CHARACTERISTICS (BY DIRECTION)

Parameter	All - Day	Mon. - Fri.	Sat.	Sun.
SOUTH BOUND				
A.A.D.T.	25630	29890	22160	12590
R 12 / 24 - %	81.9	83.7	76.8	68.9
R 16 / 24 - %	91.4	92.5	87.9	84.5
AM Peak Hour	0800-0900	0800-0900	0900-1000	0900-1000
One-way flow at AM peak hour	2960	3910	1900	550
T - % (AM)	-	15.3	-	-
PM Peak Hour	1800-1900	1800-1900	1800-1900	1800-1900
One-way flow at PM peak hour	1710	1990	1420	920
T - % (PM)	-	7.7	-	-
Prop.of commercial vehicles - 16 hr.	-	10.2	-	-
NORTH BOUND				
A.A.D.T.	26070	30150	23070	13510
R 12 / 24 - %	73.9	74.5	73.7	66.7
R 16 / 24 - %	91.6	92.7	88.5	84.5
AM Peak Hour	0800-0900	0800-0900	0900-1000	0900-1000
One-way flow at AM peak hour	1370	1790	820	410
T - % (AM)	-	12.9	-	-
PM Peak Hour	1800-1900	1800-1900	1700-1800	1800-1900
One-way flow at PM peak hour	2970	3660	2040	1030
T - % (PM)	-	8.9	-	-
Prop.of commercial vehicles - 16 hr.	-	8.5	-	-

3. OTHER INFORMATION AND COMMENT

4. Vehicle classification and occupancy - Monday to Friday

Time		Class of vehicle									
		Motor Cycle	Private Car	Taxi	Private LB	PLB	Goods veh.		Non Fr. Bus	Fr. Bus	
							Light	M & H		SD	DD
0700-0800	Pro	6.2	29.5	19.6	2.1	2.8	18.9	6.0	4.4	0.0	10.7
	Ocp	1.1	1.4	2.0	6.2	16.9	1.8	1.7	28.6	0.0	65.7
0800-0900 Peak hour	Pro	2.4	49.5	18.3	0.4	1.5	13.4	4.1	4.0	0.0	6.5
	Ocp	1.1	1.3	2.1	6.4	17.6	1.7	1.5	43.1	0.0	78.6
0900-1000	Pro	1.1	58.8	14.4	0.3	0.5	16.0	4.9	0.7	0.0	3.2
	Ocp	1.0	1.3	2.2	5.4	17.0	1.8	1.8	32.2	0.0	63.9
1000-1100	Pro	2.4	56.5	15.3	0.7	0.4	17.8	3.2	0.3	0.0	3.4
	Ocp	1.1	1.3	2.1	2.4	11.8	1.7	1.6	2.0	0.0	45.7
1100-1200	Pro	1.5	56.1	15.4	0.6	0.5	17.2	3.8	0.5	0.0	4.4
	Ocp	1.1	1.4	2.2	2.4	11.3	1.6	1.3	13.3	0.0	41.0
1200-1300	Pro	1.0	59.3	13.5	1.5	0.7	14.5	4.6	1.3	0.0	3.8
	Ocp	1.0	1.5	2.3	8.2	13.0	1.7	1.4	9.0	0.0	38.8
1300-1400	Pro	2.2	53.5	16.3	0.5	0.5	18.6	3.4	0.8	0.0	4.2
	Ocp	1.2	1.6	2.3	6.8	14.8	1.8	1.5	12.2	0.0	47.3
1400-1500	Pro	1.9	55.4	13.9	0.3	0.6	18.9	4.5	0.5	0.0	4.0
	Ocp	1.2	1.5	2.3	1.0	7.6	1.7	1.7	3.0	0.0	33.2
1500-1600	Pro	2.6	57.1	14.3	0.0	0.3	18.5	3.1	0.2	0.0	3.8
	Ocp	1.2	1.5	2.2	0.0	12.7	1.6	1.5	2.5	0.0	38.8
1600-1700	Pro	2.2	59.2	12.7	0.4	0.8	17.8	2.5	0.3	0.0	4.2
	Ocp	1.2	1.5	2.1	2.8	17.0	1.6	1.3	3.7	0.0	43.8
1700-1800	Pro	5.6	51.0	12.8	0.3	0.7	21.0	2.4	0.8	0.0	5.4
	Ocp	1.2	1.5	2.2	2.3	17.0	1.7	1.6	2.6	0.0	62.0
1800-1900	Pro	3.3	67.9	11.8	0.1	0.9	7.6	0.9	2.3	0.0	5.2
	Ocp	1.2	1.5	2.4	6.0	18.6	1.6	1.5	38.5	0.0	75.9
1900-2000	Pro	2.0	73.1	12.3	0.0	0.8	5.0	0.9	1.2	0.0	4.6
	Ocp	1.2	1.5	2.2	0.0	19.1	1.5	1.4	28.3	0.0	63.1
2000-2100	Pro	1.9	68.3	15.9	0.6	1.1	3.0	0.6	1.1	0.0	7.6
	Ocp	1.2	1.4	2.2	1.3	19.0	1.6	1.3	13.5	0.0	43.3
2100-2200	Pro	5.0	52.2	25.8	0.3	1.7	3.0	0.3	0.0	0.0	11.8
	Ocp	1.0	1.4	2.2	3.0	16.8	1.4	1.0	0.0	0.0	41.8
2200-2300	Pro	2.9	52.8	27.7	0.0	1.5	2.9	0.9	0.9	0.1	10.3
	Ocp	1.2	1.4	2.1	0.0	12.0	1.7	1.3	3.0	10.0	38.1
16 hours	Pro	2.5	57.8	15.0	0.4	0.8	14.1	3.0	1.3	0.1	5.0
	Ocp	1.1	1.4	2.2	4.9	16.1	1.7	1.6	29.0	10.0	55.4

Legend: Pro. Proportion of vehicles in % (Sum may not add up to 100% due to figure rounding)*

Ocp. Average occupancy of vehicles including both driver and passengers*

M&H Medium and Heavy

* All traffic data are collected from combined bounds